

# Ultra-Flat Cylinders with Stop Ring

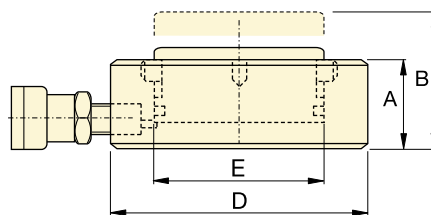
▼ CULP50 Ultra-Flat Cylinder, with Stop Ring




- Up to 4% side load of maximum capacity
- Stop ring for maximum stroke limitation
- Extremely low collapsed height
- Nitrocarburized surface treatment for harsh conditions.



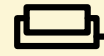
Torque and tension specialist



| Cylinder Capacity @ 700 bar | Stroke | Model Number          | Cylinder Effective Area | Oil Capacity       | Collapsed Height A | Extended Height B | Outside Diam. D | Cylinder Bore Diam. E |  |
|-----------------------------|--------|-----------------------|-------------------------|--------------------|--------------------|-------------------|-----------------|-----------------------|---|
| ton (kN)                    | (mm)   |                       | (cm <sup>2</sup> )      | (cm <sup>3</sup> ) | (mm)               | (mm)              | (mm)            | (mm)                  | (kg)  |
| 10 (97)                     | 6      | CULP10 <sup>1)</sup>  | 13,9                    | 8,3                | 27,5               | 33,5              | 72              | 42                    | 1,0   |
| 20 (198)                    | 6      | CULP20 <sup>1)</sup>  | 28,3                    | 17,0               | 32,0               | 38,0              | 90              | 60                    | 1,7   |
| 30 (310)                    | 6      | CULP30 <sup>1)</sup>  | 44,2                    | 26,5               | 35,0               | 41,0              | 105             | 75                    | 2,5   |
| 50 (550)                    | 6      | CULP50 <sup>1)</sup>  | 78,5                    | 47,1               | 44,5               | 50,5              | 140             | 100                   | 5,4   |
| 100 (1078)                  | 6      | CULP100 <sup>2)</sup> | 153,9                   | 92,5               | 65,0               | 71,0              | 195             | 140                   | 11,5  |

<sup>1)</sup> Coupler AR630 including dustcap: use HB7206 hose including AH630 coupler to connect to your pump.  
<sup>2)</sup> Coupler CR400 including dustcap: use HC-Series hose including CH604 coupler to connect to your pump.

## CULP Series



Capacity:  
**10 - 100 ton**

Stroke:  
**6 mm**

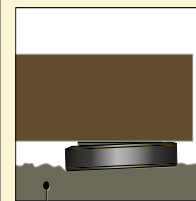
Maximum Operating Pressure:  
**700 bar**



**IMPORTANT!**  
All Ultra-Flat Cylinders require a solid lifting surface for correct support. The use of these flat cylinders on surfaces such as sand, mud or dirt, may result in cylinder damage.



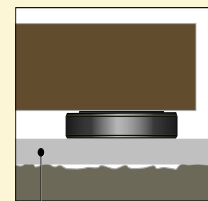
**INCORRECT!**



Rough soil



**CORRECT!**



Flat lifting surface

For more safety instructions see our 'Yellow Pages'.

Page: 264



### Hoses

Enerpac offers a complete line of high quality hydraulic hoses. To ensure the integrity of your system, specify only Enerpac

hydraulic hoses.

Page: 122

▼ The Ultra-Flat cylinders are designed for applications where high lifting forces are required in confined spaces starting at 2,8 cm.

