

# RARH-Series, Hollow Plunger Cylinders

▼ Shown from left to right: RARH-6010 and RARH-306



- Lighter and shorter collapsed height than equivalent RACH models
- Double-acting for rapid retraction, regardless of hose lengths or system losses
- Built-in safety valve prevents accidental over-pressurization
- Hollow plunger design allows for both pull and push forces
- Hard coat finish on all surfaces resists damage and extends cylinder life
- Handles and CR-400 couplers with dust caps included on all models
- Floating center tube increases seal life
- Steel baseplate and saddle for protection against load-induced damage
- Integral stop ring prevents plunger over-travel and is capable of withstanding the full cylinder capacity
- All cylinders meet ASME B-30.1 standards.

Torque and tension specialist

## The Lightweight Solution for Double-Acting Applications



### Hoses

Enerpac offers a complete line of high-quality hydraulic hoses. To ensure the integrity of your system, specify only Enerpac hydraulic hoses.

Page: 128



### Gauges

Minimize the risk of overloading and ensure long, dependable service from your equipment. Refer to the System Components section for a full range of gauges.

Page: 127



### 4-Way Control Valve

The P-84 and P-464 hand pumps feature a manual 4-way control valve, designed for use with one double-acting or two single-acting cylinders. For system set-up information:

Page: 76

Cylinder Capacity ton (kN)	Stroke * (mm)	Model Number	Maximum Cylinder Capacity at 700 bar (kN)		Cylinder Effective Area (cm <sup>2</sup> )		Oil Capacity (cm <sup>3</sup> )	
			Advance	Retract	Advance	Retract	Advance	Retract
30 (359)	50	RARH-302	359	187	51,2	26,7	256	134
	150	RARH-306	359	187	51,2	26,7	769	401
	250	RARH-3010	359	187	51,2	26,7	1281	668
60 (595)	50	RARH-602	595	264	84,9	37,7	425	189
	150	RARH-606	595	264	84,9	37,7	1274	566
	250	RARH-6010	595	264	84,9	37,7	2124	943
100 (1001)	50	RARH-1002	1001	568	142,9	81,1	715	405
	150	RARH-1006	1001	568	142,9	81,1	2144	1216
	250	RARH-10010	1001	568	142,9	81,1	3574	2027
150 (1489)	50	RARH-1502	1489	748	212,6	106,8	1063	534
	150	RARH-1506	1489	748	212,6	106,8	3190	1602
	250	RARH-15010	1489	748	212,6	106,8	5316	2670

\* Intermediate strokes and other tonnages available upon request.

# Aluminium Double-Acting Hollow Plunger Cylinders



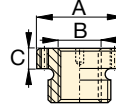
## Steel Base Plate

The steel base plate protects the cylinder base from damage, it should not be removed. The base holes in these aluminum cylinders are designed for securing the steel base plate.

They will not withstand the capacity of the cylinder. Do not use the base holes in these aluminum cylinders to attach any device to the cylinder.

## Optional Threaded Hollow Saddles

Saddle Type	Cylinder Model Number	Saddle Model Number	Saddle Dimensions (mm)		
			A	B	C
Threaded Hollow	RARH-302, 306, 3010	HP-3015	63	1 1/4"-7 UN	9
	RARH-602, 606, 6010	HP-5016	91	1 5/8"-5 1/2 UN	12
	RARH-1002, 1006, 10010	HP-10016	126	2 1/2"-8 UN	13

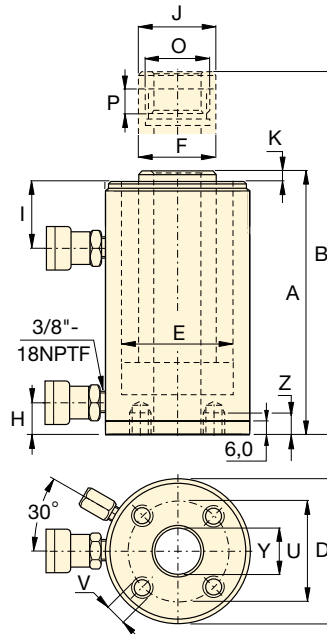


Smooth hollow saddles are standard on all RARH-models.

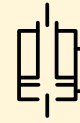
## Steel Base Plate Mounting Holes (mm)

Cylinder Model / Capacity (ton)	Bolt Circle U	Thread V	Thread Depth <sup>1)</sup> Z
RARH-30	110	M6	12
RARH-60	160	M6	12
RARH-100	200	M10	12
RARH-150	250	M10	12

<sup>1)</sup> Including Base Plate Height of 6 mm and four (4) base plate bolts.



## RARH Series



Capacity:

**30 - 150 ton**

Stroke:

**50 - 250 mm**

Center Hole Diameter:

**34 - 79 mm**

Maximum Operating Pressure:

**700 bar**



## RACH-Series, Single-Acting, Spring Return

To be used when a single-acting pump is available and retraction time is not critical.

Page: 16



## Pump Selection

A double-acting cylinder must be powered by a pump with a 4-way valve.

Page: 316

Collapsed Height	Extended Height	Outside Diameter	Cylinder Bore Diameter	Plunger Diameter	Cyl. Base to Advance Port	Cyl. Top to Return Port	Saddle Diameter	Saddle Protrusion from Plunger	Plunger Internal Thread	Plunger Thread Length	Center Hole Diameter	Weight (kg)	Model Number
A (mm)	B (mm)	D (mm)	E (mm)	F (mm)	H (mm)	I (mm)	J (mm)	K (mm)	O (inch)	P (mm)	Y (mm)	(kg)	
209	259	135	95	75	22	64	63	10	1 13/16"-16 UN	23	34	8,9	RARH-302
309	459	135	95	75	22	64	63	10	1 13/16"-16 UN	23	34	11,9	RARH-306
409	659	135	95	75	22	64	63	10	1 13/16"-16 UN	23	34	14,9	RARH-3010
246	296	180	130	110	48	83	92	13	2 3/4"-16 UN	20	54	16,8	RARH-602
346	496	180	130	110	48	83	92	13	2 3/4"-16 UN	20	54	22,2	RARH-606
446	696	180	130	110	48	83	92	13	2 3/4"-16 UN	20	54	27,6	RARH-6010
254	304	235	165	130	61	78	126	13,5	4"-16 UN	27	79	28,9	RARH-1002
354	504	235	165	130	61	78	126	13,5	4"-16 UN	27	79	38,3	RARH-1006
454	704	235	165	130	61	78	126	13,5	4"-16 UN	27	79	47,7	RARH-10010
264	314	280	190	150	61	83	127	18,8	4 1/4"-12 UN	40	79	42,4	RARH-1502
364	514	280	190	150	61	83	127	18,8	4 1/4"-12 UN	40	79	56,2	RARH-1506
464	714	280	190	150	61	83	127	18,8	4 1/4"-12 UN	40	79	70,0	RARH-15010